

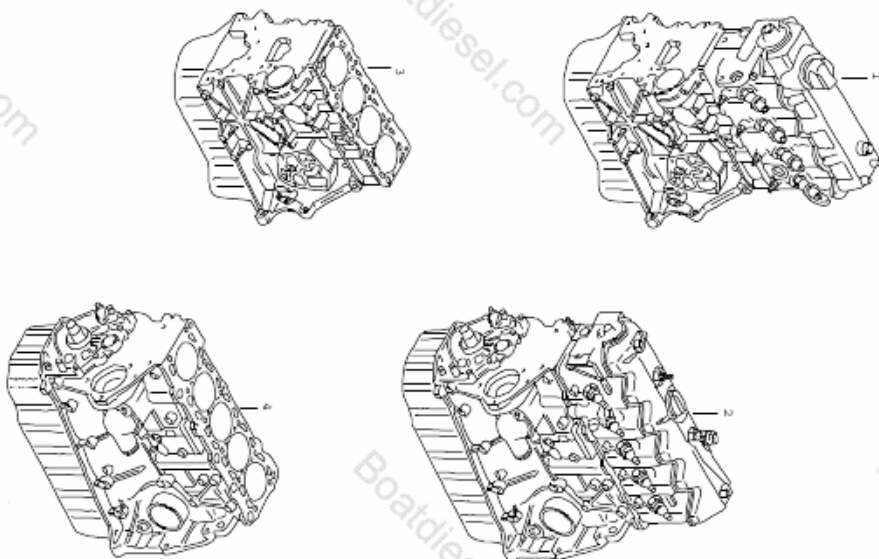
Ill-Nb:	Model Marine-Motore	Year 2002 - 2009	Eng-Number	VOLKSWAGEN marine	13:20	01.09.2010
---------	------------------------	---------------------	------------	-------------------	-------	------------

Pos	Part number	Description	Remark	Qty	Model
>>	038 198 151	repair kits refer to illustration text pages to allocate repair set		4	
>>	074 198 151	1 set: piston rings comprising: piston ring, upper piston ring, lower oil scraper ring	79.5 79.5X1.75 79.5X2 79.5X3	1 1 1	
>>	074 198 151	1 set: piston rings comprising: piston ring, upper piston ring, lower oil scraper ring	81 81X2.5 81X2 81X3	5 1 1 1	
>>	044 198 401 A	1 set: connecting rods comprising: conrod		1	
>>	074 105 401 C	1 set: connecting rods comprising: conrod		4	
>>	059 198 401 D	1 set: connecting rods comprising: conrod		1	
>>	074 198 401 B	1 set: connecting rods comprising: conrod		6	
>>	074 198 401 B	1 set: connecting rods comprising: conrod		5	
>>	026 198 421	1 set: thrust washers comprising: thrust washer thrust washer	bearing 3 upper lower	1 2 2	
>>	035 198 421	1 set: thrust washers comprising: thrust washer thrust washer		1	
>>	078 198 421	1 set: thrust washers comprising: thrust washer thrust washer	lower upper	2 2	AAH
>>	026 198 491	1 set: crankshaft bearings comprising: crankshaft bearing shell yellow	bearings 1-5 upper lower	4 1 1	
>>	026 105 561 B	crankshaft bearing shell yellow	lower	1	
>>	026 105 591 B	crankshaft bearing shell yellow	lower	1	
>>	034 198 491 D	1 set: crankshaft bearings comprising: crankshaft bearing shell yellow	upper	6	
>>	057 198 491 A	1 set: crankshaft bearings comprising: crankshaft bearing shell yellow	lower	1	
>>	057 105 591	crankshaft bearing shell yellow	lower	6	
>>	057 105 561 D	crankshaft bearing shell yellow	lower	1	
>>	065 198 243	repair set for impeller comprising:	upper	1	

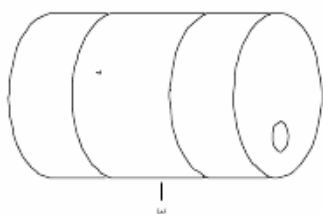
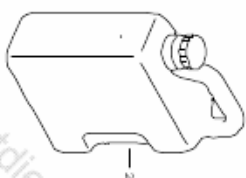
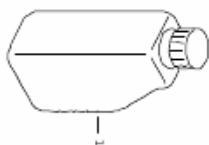
Ill-Nb	Model Marine-Motore	Year 2002 - 2009	Eng-Number	VOLKSWAGEN marine	13:20	01.09.2010
--------	------------------------	---------------------	------------	-------------------	-------	------------

Pos	Part number	Description	Remark	Qty	Model	Pos	Part number	Description	Remark	Qty	Model
	065 127 248	impeller round seal gasket gasket		1 1 1 1							
>>	06V 198 243	repair set for impeller comprising: round seal		1							
	065 127 248			1							

Ill-Nb: 100-10	Model Marine-Motore	Year 2002 - 2009	Eng-Number	VOLKSWAGEN marine	14:26	14.10.2010
-------------------	------------------------	---------------------	------------	-------------------	-------	------------

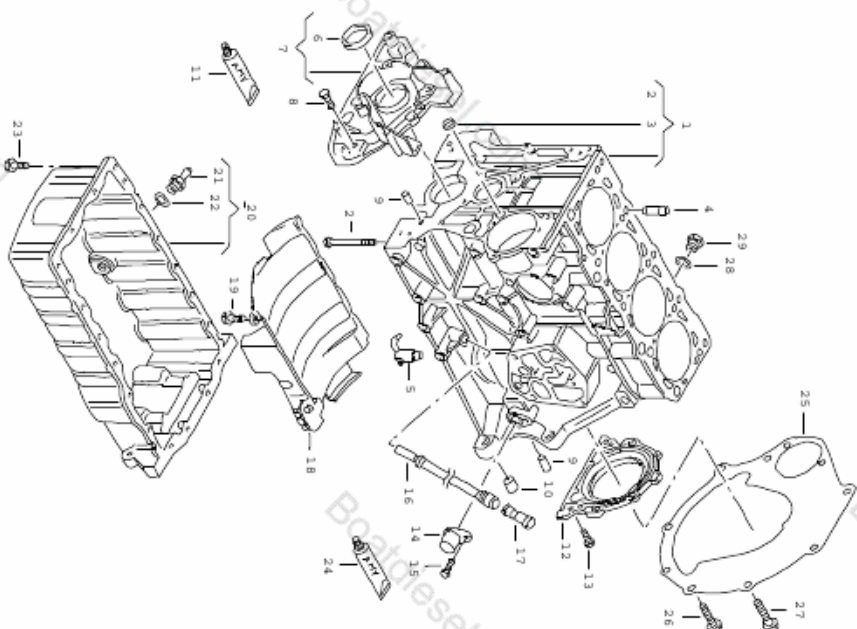
					
Pos	Part number	Description	Remark	Qty	Model
1	064 100 035	base engine	29/37/44/55KW 1.9lit.	1	BGM,BGL,ANC, CDXA,CDXB
2	065 100 031	base engine	40/55KW 2.5lit.	1	BCT,ANF
(2)	065 100 031 A	base engine from old unit as required:	74-121KW 2.5lit. 074 130 201 K 074 130 202 R	1 X X	ANG,ANH,BCU, BCV,BTW BTW
4	065 100 103	short block short block	2.5lit. 40-121KW 2.5lit.	1	

Ill-Nb: 100-99	Model Marine-Motore	Year 2002 - 2009	Eng-Number	VOLKSWAGEN marine	14:27	14.10.2010
-------------------	------------------------	---------------------	------------	-------------------	-------	------------



Pos	Part number	Description	Remark	Qty	Model
1	G 052 183 M2	engine oil 'longlife' engine oil >01.05	1.0 ltr. 0W-30 VW50601	X	
(1)	GVW 052 195 M2	'longlife' engine oil 01.05>	1.0 ltr. 5W-30 VW50700	X	
2	G 052 183 M4	'longlife' engine oil >01.05	5.0 l 0W-30 VW50601	X	
(2)	G 052 195 M4	'longlife' engine oil 01.05>	5.0 l 5W-30 VW50700	X	
3	G 052 183 M6	'longlife' engine oil >01.05	60ltr. 0W-30 VW50601	X	
(3)	G 052 195 M6	'longlife' engine oil 01.05>	60ltr. 5W-30 VW50700	X	

Ill-Nb	Model	Year	Eng-Number	VOLKSWAGEN marine	14:27	14.10.2010
103-05	Marine-Motore	2002 - 2009				

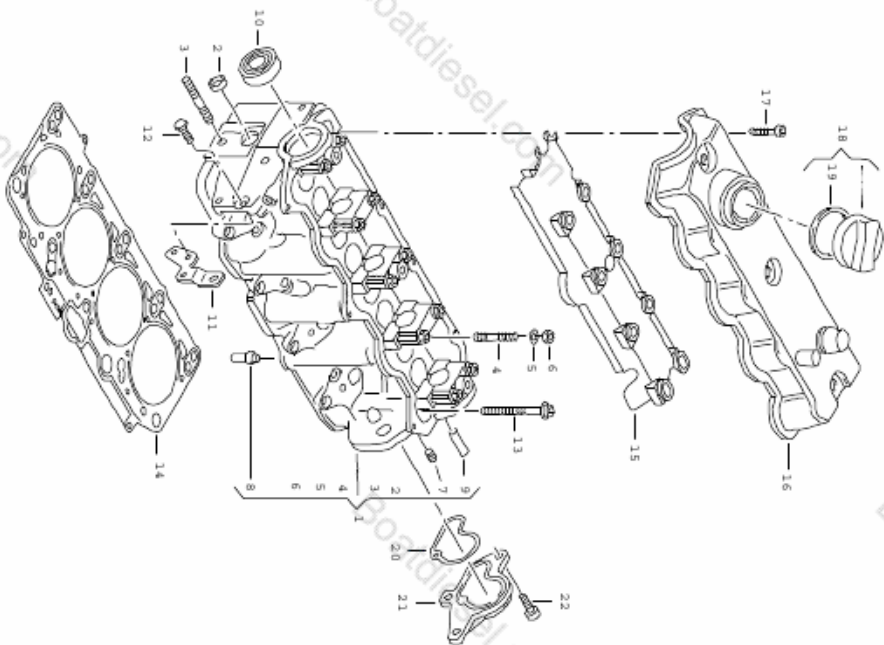


Pos	Part number	Description	Remark	Qty	Model
1	038 103 101 L	cylinder block with pistons	1,9ltr.	1	ANC,BGL,BGM,CDXA,CDXB
2	N 901 300 01	hexagonal head bolt	M10X80	10	
3	N 011 907 10	locking cover	14	3	
4	028 103 039 A	dowel sleeve	14,15X21	2	
5	028 103 157 A	oil spray jet	M10	4	
6	038 103 085 E	oil seal	35X48X10	1	
7	038 103 151 H	sealing flange	front	1	
8	N 909 450 02	hexagon socket head bolt with shoulder	M7X21,5	6	
9	N 043 207 2	parallel dowel pin	8X14	4	
10	022 103 139	dowel sleeve	16X13,5	2	
(10)	022 103 139 B	dowel sleeve	16X13,5	2	
11	D 176 404 A2	silicone sealant	93G	X	
12	06A 103 171 A	sealing flange	front	1	
13	N 909 450 02	sealing flange	rear	1	
14	038 957 147 C	hexagon socket head bolt with shoulder	M7X21,5	6	
(14)	038 907 319 F	impulse sender		1	
-	N 906 355 17	corrugated pipe in coils of 5m	4,5	X	
-	N 906 437 01	shorten to: cable tie with holder for weld pin:	600MM	1	
-	N 906 819 01	corrugated pipe end piece	10X187	X	
15	N 101 045 01	12-point head bolt	5MM	X	
16		tube for oil dipstick see illustration:	4,5 M7X18	1	
			115-10		

Ill-Nb: 103-05	Model Marine-Motore	Year 2002 - 2009	Eng-Number	VOLKSWAGEN marine	14:27	14.10.2010
-------------------	------------------------	---------------------	------------	-------------------	-------	------------

Pos	Part number	Description	Remark	Qty	Model	Pos	Part number	Description	Remark	Qty	Model
17		guide funnel see illustration:	115-10	1							
18	038 103 623	hexagon socket head bolt with shoulder	M7X55	3							
19	N 907 040 06	oil sump		1							
20	064 103 601	threaded union		1							
21	064 115 681	o-ring	14X18	1							
22	N 013 814 2	hexagon socket head bolt with shoulder	M7X28	20							
23	N 907 356 04	silicone sealant	93G	X							
24	D 176 404 A2	cover panel		1							
25	064 103 647	bolt, hex. hd. with shoul. (comb.)	M10X95X45	3							
26	N 105 702 01	hexagon head bolt c/w shoulder	M12X100	5							
27	N 904 957 04	o-ring	18X22	1							
28	N 013 832 1	sealing plug	M18X1,5	1							
29	N 016 161 6										

Ill-Nb 103-30	Model Marine-Motore	Year 2002 - 2009	Eng-Number	VOLKSWAGEN marine	14:44	14.10.2010
------------------	------------------------	---------------------	------------	-------------------	-------	------------



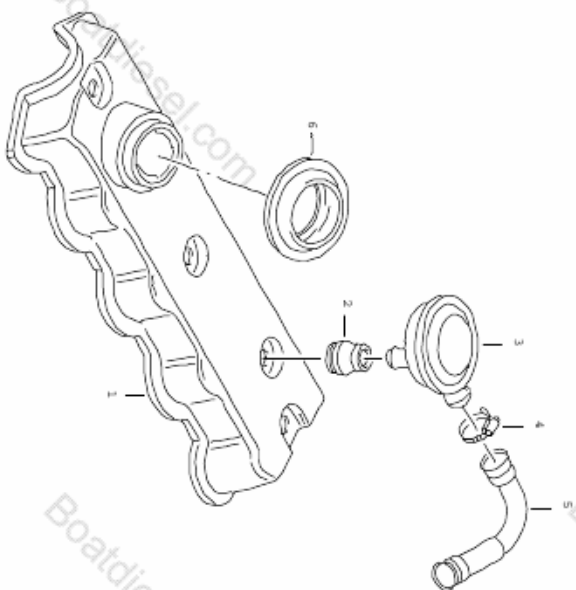
Pos	Part number	Description	Remark	Qty	Model
1	064 103 351	cylinder head	1.9ltr.	1	ANG, BGL, BGM, CDXA, CDXB
2	N 011 914 10	cylinder head cover	24	1	
(2)	N 011 919 1	locking cover	25	1	
3	N 014 634 1	locking cover	M10XM8X68	1	
4	056 103 397	stud	M8X56	10	
5	N 011 558 11	washer	8,4X15X1,6	10	
6	N 011 008 8	hexagonal nut	M8	10	
7	N 902 818 02	seal bolt (combination)	M10X1X10	1	
8	037 103 419 B	valve guide	36,5MM/7MM	8	
9	044 103 499 B	connecting socket		1	
10	038 103 085 C	shaft oil seal (shaft rotation: to right)	47X10X32	1	
11	038 103 941 E	holder		1	
12	N 090 354 3	hexagon head bolt (comb)	M8X28	1	
13	068 103 384 A	cheese head bolt	M12X115	10	
14	038 103 383 AL	cylinder head gasket	1,55MM 1 hole	X	
(14)	038 103 383 AM	cylinder head gasket	1,63MM 2 holes	X	
(14)	038 103 383 AN	cylinder head gasket	1,71MM 3 holes	X	
15	038 103 656	partition		1	
16	038 103 469 E	cylinder head cover		1	
17	N 101 725 01	allen key head bolt (comb)	M6X22	7	
18	06B 103 485 C	locking cover		1	
19	06A 103 483 D	gasket		1	
20	038 145 345	o-ring		1	
21	064 145 420	locking cover		1	

III-Nb. 103-30	Model Marine-Motore	Year 2002 - 2009	Eng. Number	VOLKSWAGEN marine	14:44	14.10.2010
-------------------	------------------------	---------------------	-------------	-------------------	-------	------------

[illegible]



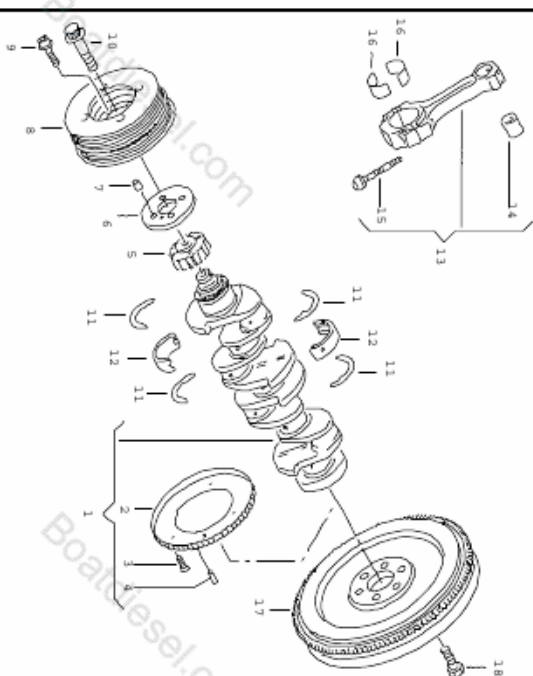
Ill-Nb: 103-60	Model Marine-Motore	Year 2002 - 2009	Eng-Number	VOLKSWAGEN marine	14:45	14.10.2010
-------------------	------------------------	---------------------	------------	-------------------	-------	------------



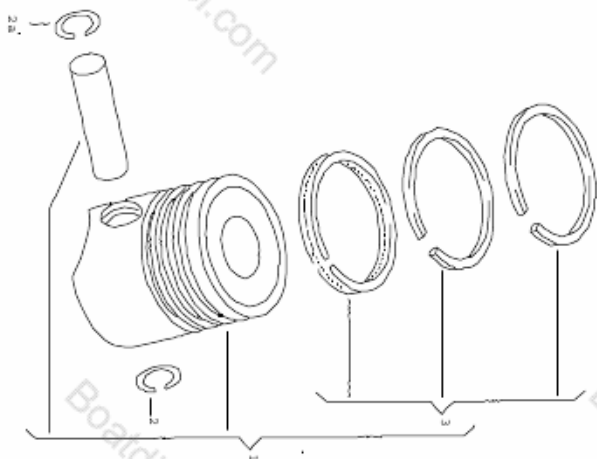
Pos	Part number	Description	Remark	Qty	Model
1	028 103 500	ventilation for cylinder head cover	1.9ltr.	1	ANC, BGL, BGM, CDXA, CDXB
2	038 129 101 A	cylinder head cover see illustration:	103-30	1	
3		gasket		1	
4		pressure regulating valve			
5		spring-type clip see illustration:	133-10		
6	038 133 287 C	breather hose see illustration:	133-10	1	
		o-ring			

Ill-Nb	Model	Year	Eng-Number	VOLKSWAGEN marine	14:46	14.10.2010
105-10	Marine-Motore	2002 - 2009				

Pos	Part number	Description	Remark	Qty	Model
1	038 105 021 E	crankshaft control bearings	1.9ltr.	1	ANC,BGL,BGM
2	028 105 189 B	crankshaft speed sender ring		1	
3	053 105 229	countersunk bolt	M8X16	3	
4	N 013 199 1	parallel dowel pin	6X12	1	
5	038 105 263 E	toothed belt pulley		1	
6	064 105 387	thrust washer		1	
7	N 908 208 01	dowel sleeve	11X11	1	
8	064 105 243	vibration damper		1	
9	N 903 487 04	cheese head bolt	M8X45	4	
10	064 105 229	12-point head bolt	M16X54	1	
11	026 198 421	1 set: thrust washers	bearing 3	1	
12	026 198 491	1 set: crankshaft bearings	LAGER 1-5	5	
13	044 198 401 A	1 set: connecting rods		1	
14	028 105 431 D	bush - connecting rod	M8X1X45	4	
15	028 105 425 C	bolt - connecting rod		8	
16	033 105 701	connecting rod bearing shell		8	
17	064 105 269 A	flywheel		1	
18	N 906 650 01	socket head bolt with inner multipoint head	M10X1X22.30	6	



Ill-Nb 107-00	Model Marine-Motore	Year 2002 - 2009	Eng-Number	VOLKSWAGEN marine	14:47	14.10.2010
------------------	------------------------	---------------------	------------	-------------------	-------	------------

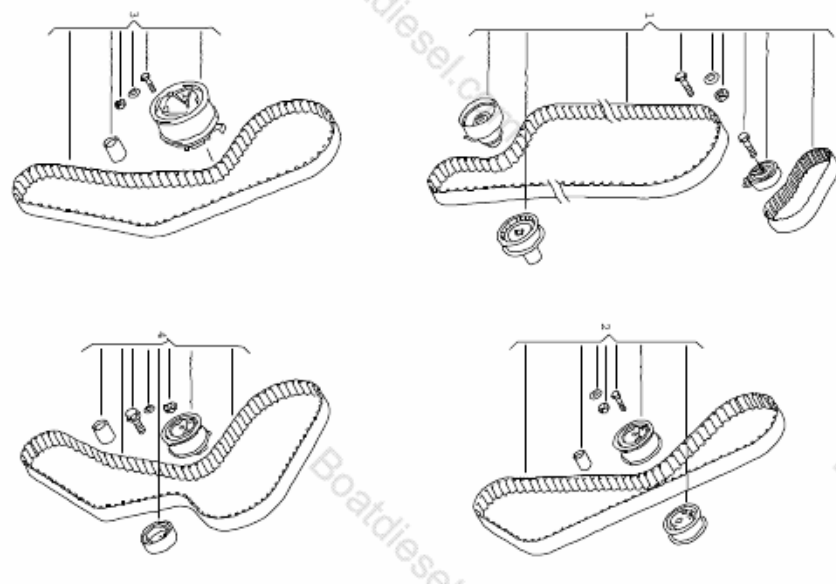


Pos	Part number	Description	Remark	Qty	Model
1	038 107 065 CK	piston complete	1.9ltr. cylinders 1,2 ALCAN	2	4 cylinder: ANC,BGL,BGM, CDXA,CDXB
	1/03- 001	blue	79,46		
	1/03- 003	pink	79,48		
(1)	038 107 065 CL	piston complete	cylinders 3,4 ALCAN	2	
	1/03- 001	blue	79,46		
	1/03- 003	pink	79,48		
2	N 012 277 1	securing ring	24X1,5	8	
3	038 198 151	1 set: piston rings	79,5	4	
		piston	2.5ltr.		5 cylinder: ANF,ANG,ANH, BCT,BCU,BCV, BTW
1	074 107 065 E	piston complete	cylinders 1,2	2	
	2/02- 001	blue	80,96		
(1)	074 107 065 F	piston complete	cylinders 3-5	3	
	2/02- 001	blue	80,96		
2	N 101 333 01	snap ring	26X1,5	5	
2A	N 101 333 01	snap ring	26X1,5	5	
3	074 198 151	1 set: piston rings	81	5	
		piston	3.0ltr.		6-cylinder: BSP,CEZA
1	059 107 065 BJ	piston complete	83,010	6	
2	059 107 441	snap ring	30X2	6	
2A	059 107 441	snap ring	30X2	6	
(3)	059 198 151 J	1 set: piston rings	83,010	6	
		D >> 19.10.2008			

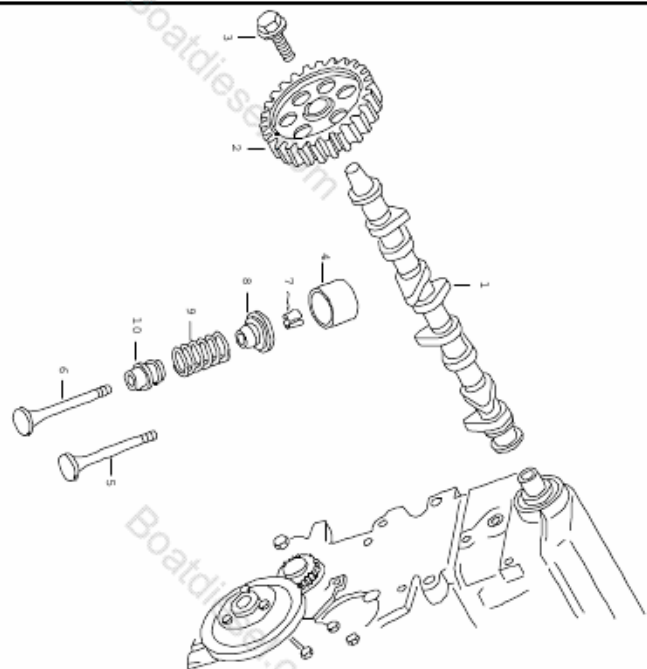
Ill-Nb 107-00	Model Marine-Moteur	Year 2002 - 2009	Eng-Number	VOLKSWAGEN marine	14:47	14.10.2010
------------------	------------------------	---------------------	------------	-------------------	-------	------------

Pos	Part number	Description	Remark	Qty	Model	Pos	Part number	Description	Remark	Qty	Model
3	059 198 151 M	1 set: piston rings D 20.10.2008>>	83.010	6							

Ill-Nb: 109-00	Model Marine-Motore	Year 2002 - 2009	Eng-Number	VOLKSWAGEN marine	14:48	14.10.2010
-------------------	------------------------	---------------------	------------	-------------------	-------	------------

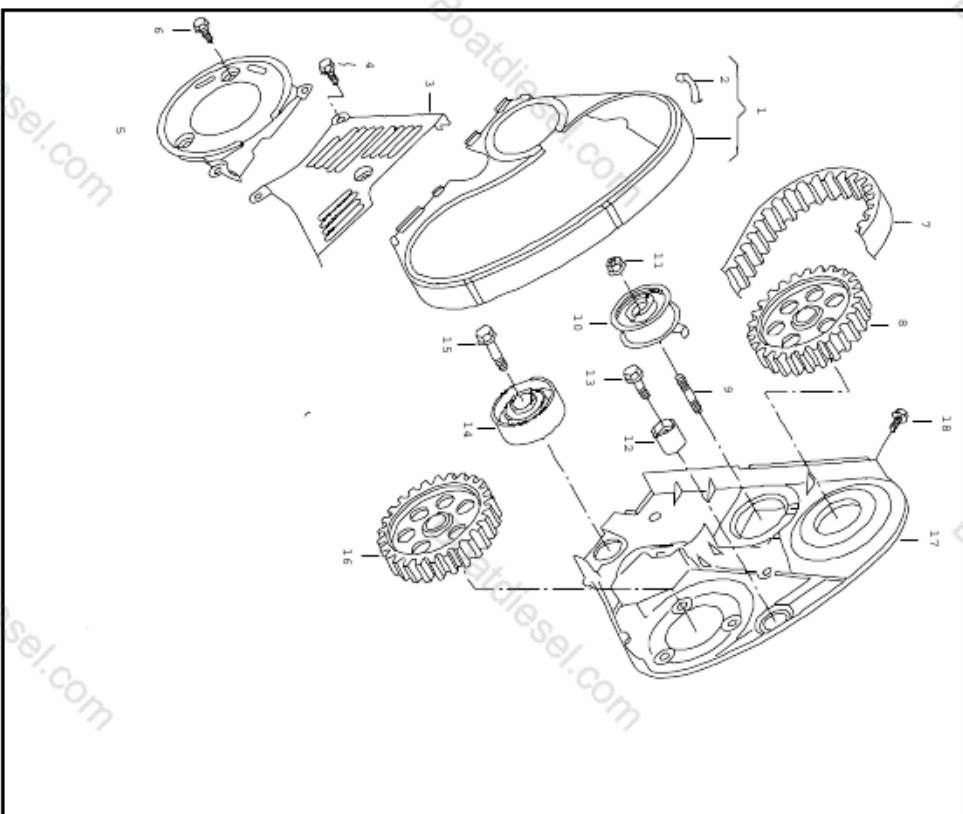
						
Pos	Part number	Description	Remark	Qty	Model	
2	038 198 119 E	repair kit for toothed belt with tensioning roller		1	4 cylinder	
4	065 198 119	repair kit for toothed belt with tensioning roller		1	5-cylinder	

Ill-Nb: 109-10	Model Marine-Motore	Year 2002 - 2009	Eng-Number	VOLKSWAGEN marine	14:48	14.10.2010
-------------------	------------------------	---------------------	------------	-------------------	-------	------------



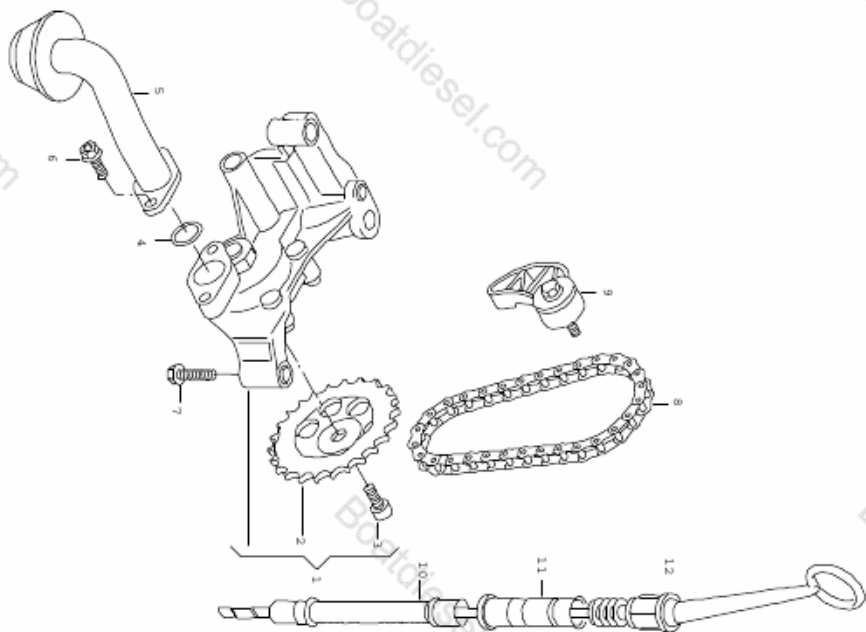
Pos	Part number	Description	Remark	Qty	Model
1	038 109 101 E	camshaft	1.9ltr.	1	ANC, BGL, BGM, CDXA, CDXB
2	038 109 111 A	toothed belt pulley		1	
3	N 905 021 03	hexagon head bolt (comb)	M12X1,5X35	1	
4	050 109 309 J	cam follower		8	
5	028 109 601 J	intake valve	96,55	4	
6	028 109 611 K	exhaust valve	96,35	4	
7	021 109 651	cotter, split		16	
8	021 109 641 C	spring disc		8	
9	028 109 623 B	spring - valve	upper	8	
10	027 109 675	seal - valve stem	7MM	8	

Ill-Nb: 109-60	Model Marine-Motore	Year 2002 - 2009	Eng-Number	VOLKSWAGEN marine	14:50	14.10.2010
-------------------	------------------------	---------------------	------------	-------------------	-------	------------



Pos	Part number	Description	Remark	Qty	Model
1	038 109 107 F	toothed belt	1.9ltr.	1	ANC,BGL,BGM,CDXA,CDXB
2	038 109 150 A	toothed belt cover	upper	1	
3	038 109 147	spring clamp	center	2	
4	N 100 829 12	toothed belt cover	M6X16	1	
5	06A 109 175 B	hexagon head bolt (combi)	lower	3	
6	N 100 829 12	toothed belt cover	M6X16	1	
7	038 109 119 M	hexagon head bolt (combi)	Z=141	2	
8		toothed belt			
9	N 014 634 1	toothed belt pulley	109-10	1	
10	038 109 243 N	stud	M10XM8X68	1	
11	N 106 092 02	tensioning roller		1	
12	058 109 244	hex. nut with washer	M8	1	
13	N 019 531 5	relay roller		1	
14	038 109 244 M	hexagon head bolt c/w shoulder	M8X40	1	
15	N 905 969 06	relay roller		1	
16		bolt, hex. hd. with shoulder, self-locking	M10X55X32	1	
17	064 109 145	toothed belt pulley	130-20	1	
18	N 100 829 12	cover panel see illustration: toothed belt pulley	M6X16	2	

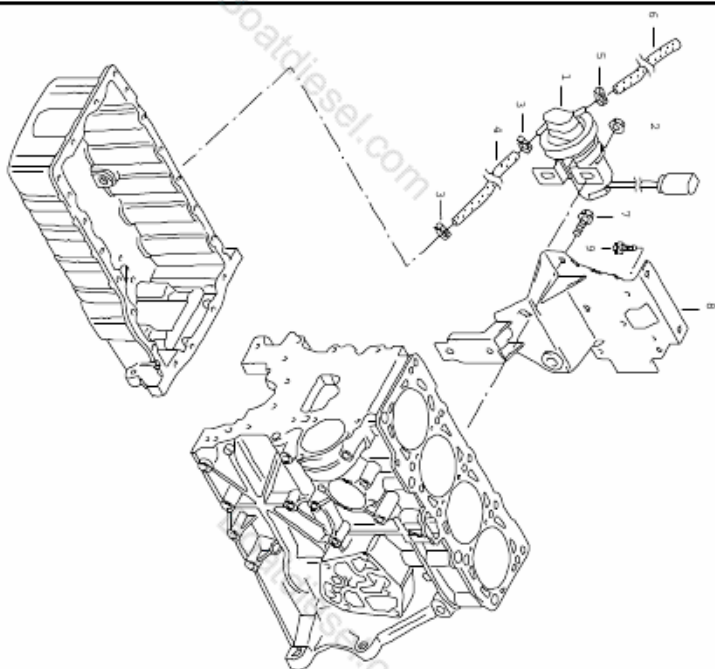
Ill-Nb 115-10	Model Marine-Motore	Year 2002 - 2009	Eng-Number	VOLKSWAGEN marine	14:51	14.10.2010
------------------	------------------------	---------------------	------------	-------------------	-------	------------



Pos	Part number	Description	Remark	Qty	Model
1	06A 115 105 B	oil pump	1.9ltr.	1	ANC, BGL, BGM, CDXA, CDXB
2	06A 115 121	oil dipstick		1	
3	N 903 659 01	sprocket	M8X22	1	
4	N 028 222 2	oval hexagon socket head bolt	20X3,15	1	
5	06A 115 251	o-ring		1	
6	N 909 450 02	suction line		1	
7	N 907 040 06	hexagon socket head bolt with shoulder	M7X21,5	2	
8	038 115 230	hexagon socket head bolt with shoulder	M7X55	2	
9	06A 115 130 B	chain		1	
10	06D 103 634 E	chain tensioner		1	
11	038 103 663 A	tube for oil dipstick		1	
(11)	038 103 663 C	guide funnel		1	
12	06A 115 611 A	guide funnel		1	
		oil dipstick		1	

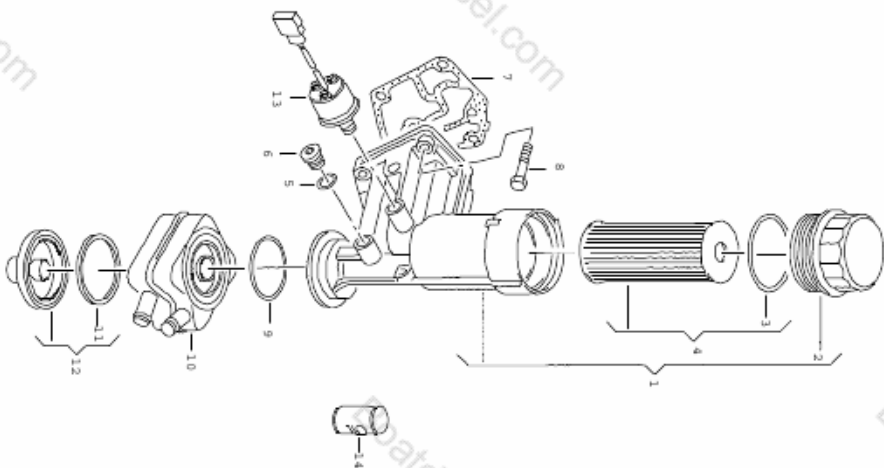


Ill-Nb: 115-40	Model Marine-Motore	Year 2002 - 2009	Eng-Number	VOLKSWAGEN marine	14:52	14.10.2010
-------------------	------------------------	---------------------	------------	-------------------	-------	------------



Pos	Part number	Description	Remark	Qty	Model
1	064 115 105	oil extraction pump	1.9ltr.	1	ANC, BGL, BGM, CDXA, CDXB
2	N 106 092 02	hex. nut with washer	M8	2	
3	N 102 334 01	spring clip	16.2X7X0.6	X	
4	064 115 688	oil hose	8X3.5X1000	1	
5	N 102 334 01	spring clip	16.2X7X0.6	1	
6	064 115 688	oil hose	8X3.5X1000	1	
7	N 101 705 09	hexagonal head bolt	M10X20	2	
8	064 121 233	holder		1	
9	N 101 559 06	hexagon head bolt c/w shoulder	M8X20	2	

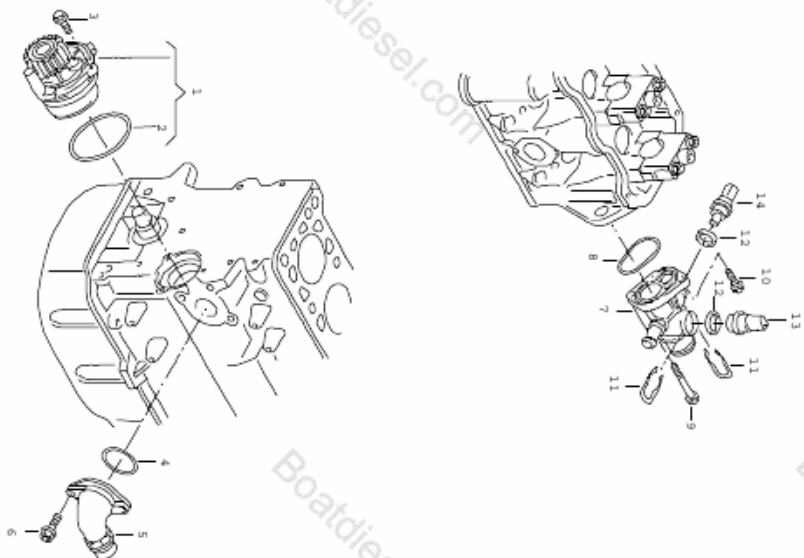
Ill-Nb 115-70	Model Marine-Motore	Year 2002 - 2009	Eng-Number	VOLKSWAGEN marine	14:53	14.10.2010
------------------	------------------------	---------------------	------------	-------------------	-------	------------



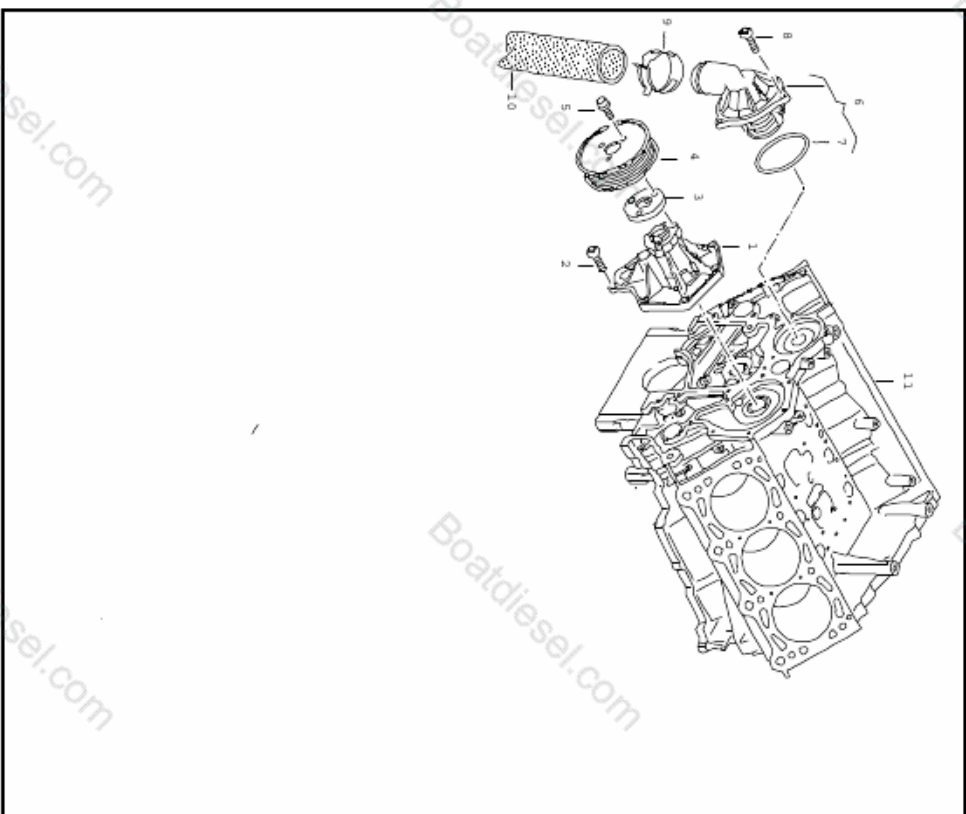
Pos	Part number	Description	Remark	Qty	Model
1	045 115 389 J	oil filter	1.9ltr.	1	ANC,BGL,BGM, CDXA,CDXB
2	045 115 433 D	oil filter bracket		X	
		oil filter with flange			
		cover	PURFLUX 045 115 389 C 045 115 389 E 045 115 389 J		
		to be used for:			
(2)	045 115 433 E	cover	M+H 045 115 389 G 045 115 389 K	X	
		to be used for:			
(2)	045 115 433 C	cover	MAHLE 045 115 389 H 74X3	X	
3	071 115 444	o-ring		1	
4	071 115 562 A	filter element with gasket		1	
		D >> 24.06.2007			
(4)	071 115 562 C	filter element with gasket	D 25.06.2007>>	1	
5	N 013 812 3	o-ring	12X15,5	1	
6	N 106 379 01	sealing plug	M12X1,5	1	
7	045 115 441	gasket	M7X40	4	
8	N 911 494 01	hexagonal head bolt	59X5	1	
9	038 117 070 A	o-ring		1	
10	028 117 021 L	oil cooler		1	
11	038 117 070	gasket	62.8	1	
12	045 117 061 F	cover		1	
13	065 919 561	oil pressure gauge sender		1	
	- 064 145 786	threaded union	feed	1	CDXA,CDXB
	- N 013 806 3	o-ring	10X14	2	CDXA,CDXB
14		engine oil	100-99		
		see illustration:			

Ill-Nb 121-05	Model Marine-Motore	Year 2002 - 2009	Eng-Number	VOLKSWAGEN marine	14:54	14.10.2010
------------------	------------------------	---------------------	------------	-------------------	-------	------------

Pos	Part number	Description	Remark	Qty	Model
1	064 121 011	water pump	1.9ltr.	1	ANC,BGL,BGM, CDXA,CDXB
2	045 121 119 A	water connection		1	
3	N 909 450 02	water pump with sealing washer	62X4	1	
4	038 121 119 B	o-ring	M7X21,5	3	
5	038 121 121 A	hexagon socket head bolt with shoulder	50X4	1	
6	N 909 450 02	connecting socket		1	
7	064 121 133	hexagon socket head bolt with shoulder	M7X21,5	2	
8	037 121 688	water connection		1	
9	N 104 145 02	o-ring	50X3,15	1	
10	N 100 636 04	hexagon head bolt (combi)	M6X75X37	1	
11	032 121 142	hexagon head bolt (combi)	M6X25	1	
12	N 903 168 02	retaining spring	19,6X3,65	2	
13	065 919 369 A	round seal	2 pin blue	1	
14	065 919 501	thermal switch	120C	1	
		dual temperature sender	4 pin	1	

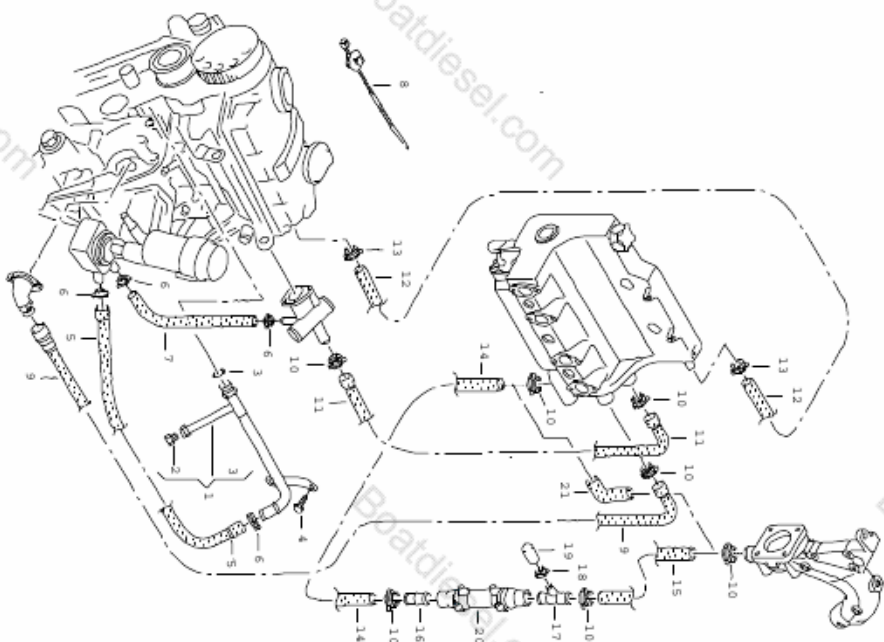


Ill-Nb	Model	Year	Eng-Number	VOLKSWAGEN marine		14:54	14.10.2010
121-15	Marine-Motore	2002 - 2009					



Pos	Part number	Description	Remark	Qty	Model
1	06E 121 005 F	water pump	3.0ltr.	1	BSP, CEZA
2	N 101 961 02	coolant thermostat		7	
3	06V 145 175	water pump with adhesive gasket		1	
4	030 145 269 A	oval hexagon socket head bolt		1	
5	N 910 268 02	intermediate flange		1	
6	059 121 111 L	ribbed belt pulley		3	
7	059 121 139 A	socket head bolt with inner multipoint head		1	
8	N 101 961 02	coolant thermostat gasket		1	
9	N 906 560 01	oval hexagon socket head bolt		3	
10		spring-type clip		1	
11		see illustration: see illustration: 103-15			

Ill-Nb	Model	Year	Eng. Number	VOLKSWAGEN marine	14:55	14.10.2010
121-40	Marine-Motore	2002 - 2009				

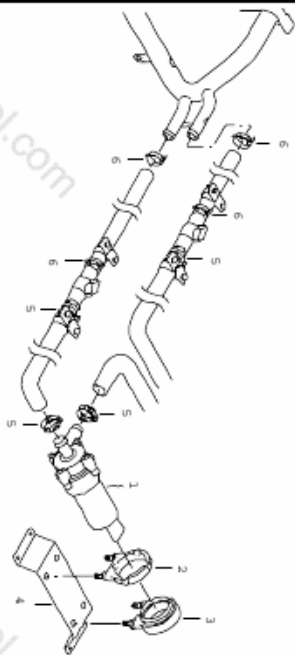


Pos	Part number	Description	Remark	Qty	Model
1	064 121 065	water pipe	1.9ltr.	1	ANC, BGL, BGM, CDXA, CDXB
2	074 121 953	drain plug		1	
3	06B 121 687	O-ring	20.5X5.5	1	
4	N 010 227 9	bolit, hexagon head self-locking	MTX12	2	
5	064 121 057 A	water hose		1	
6	N 906 869 01	spring-type clip	23X12	1	
7	064 121 057	water hose		1	
8	3D0 971 838 N	water hose	4.5X200	X	
9	064 121 622	cable tie		1	
10	N 906 872 01	water hose with quick-coupling piece		1	
11	064 121 055 A	spring-type clip	40X12	X	
12	N 910 430 01	water hose	15X3.5X450	1	
13	N 906 867 01	spring-type clip	14X12	2	
14	064 121 053 A	water hose		1	
(14)	064 121 053 A	M >> 001 200*		1	
(14)	064 121 053 A	water hose		1	PR-LS2.LS7
(14)	064 121 053 A	M 001 121>> 001 300*		1	PR-LS2.LS7, LZ0
15	064 121 053 B	water hose		1	
(15)	064 121 053 B	M >> 001 200*		1	
(15)	064 121 053 B	water hose		1	PR-LS2.LS7
(15)	064 121 053 C	M 001 201>>*		1	PR-LZ0
16	N 907 789 01	water hose		1	PR-LS2.LS7, LZ0
17	1C0 121 619 B	connection piece	32X32	1	
		junction M >> 001 200*		1	

Ill-Nb 121-40	Model Marine-Motore	Year 2002 - 2009	Eng.Number	VOLKSWAGEN marine		14:55	14.10.2010
------------------	------------------------	---------------------	------------	-------------------	--	-------	------------

Pos	Part number	Description	Remark	Qty	Model	Pos	Part number	Description	Remark	Qty	Model
(17)	1C0 121 619 B	junction M 001 201>> 001 300*		1	PRLS2.LS7						
(17)	1C0 121 619 B	junction M 001 301>>*		1	PRLS2.LS7, LZ0						
18	N 906 869 01	spring-type clip	23X12	1							
19	1J0 121 324	cap		1							
20		oil cooler see illustration:	317-05								
21	064 121 053	water hose		1	PRLS9.LR5						

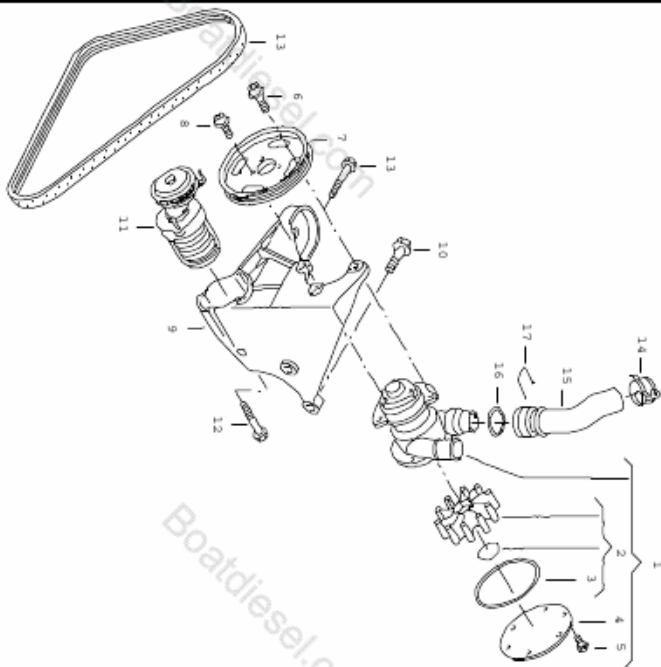
Ill-Nb: 121-48	Model Marine-Motore	Year 2002 - 2009	Eng-Number	VOLKSWAGEN marine		14:56	14.10.2010
-------------------	------------------------	---------------------	------------	-------------------	--	-------	------------



Pos	Part number	Description	Remark	Qty	Model
1	3D0 965 561 D	additional water pump		1	
2	035 959 209 F	rubber mounting		1	
3	066 959 209	rubber mount, with local device		1	
4		not replacement part			
5	N 906 870 01	spring-type clip	27X12	X	
6	N 906 869 01	spring-type clip	23X12	X	

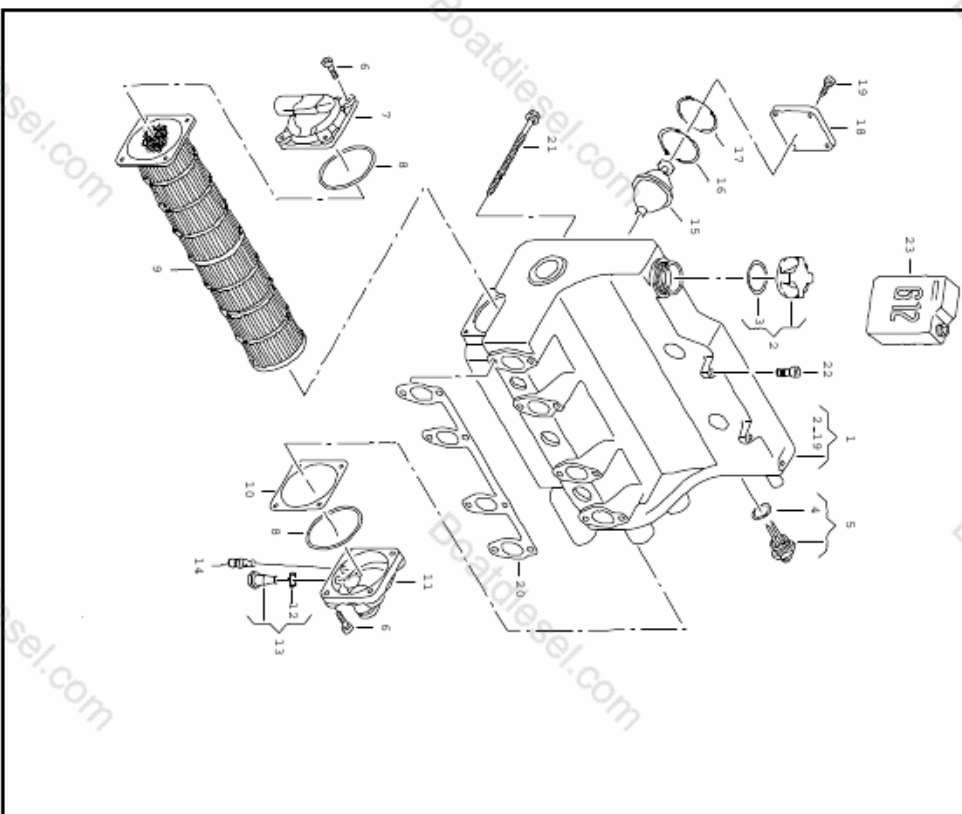
Ill-Nb	Model	Year	Eng-Number	VOLKSWAGEN marine	14:56	14.10.2010
121-55	Marine-Motore	2002 - 2009				

Pos	Part number	Description	Remark	Qty	Model
1	064 121 012	sea water pump	1.9ltr.	1	ANC, BGL, BGM, CDXA, CDXB
2	064 198 243	bracket for additional water pump		1	
3	064 127 248	sea water pump		1	
4	064 121 020	repair set for impeller		1	
5	065 121 953	round seal		1	
6	N 102 254 02	locking cover		4	
7	065 121 031	hexagonal head bolt		3	
8	N 102 501 01	hexagon socket head bolt with collar		3	
9	064 145 169	hexagon socket head bolt with collar		1	
10	N 019 531 5	pulley		1	
11	065 145 299	hexagon socket head bolt with collar		3	
12	N 910 280 02	bracket for additional water pump		1	
13	064 119 137	hexagon head bolt c/w shoulder		3	
14	N 906 872 01	belt tensioning damper		1	
15	064 121 621 A	hex socket head collared bolt		1	
16	N 907 653 01	ribbed v-belt		1	
17	1J0 121 142	spring-type clip		1	
		water hose with quick-coupling piece		1	
		round seal		2	
		retaining spring		2	



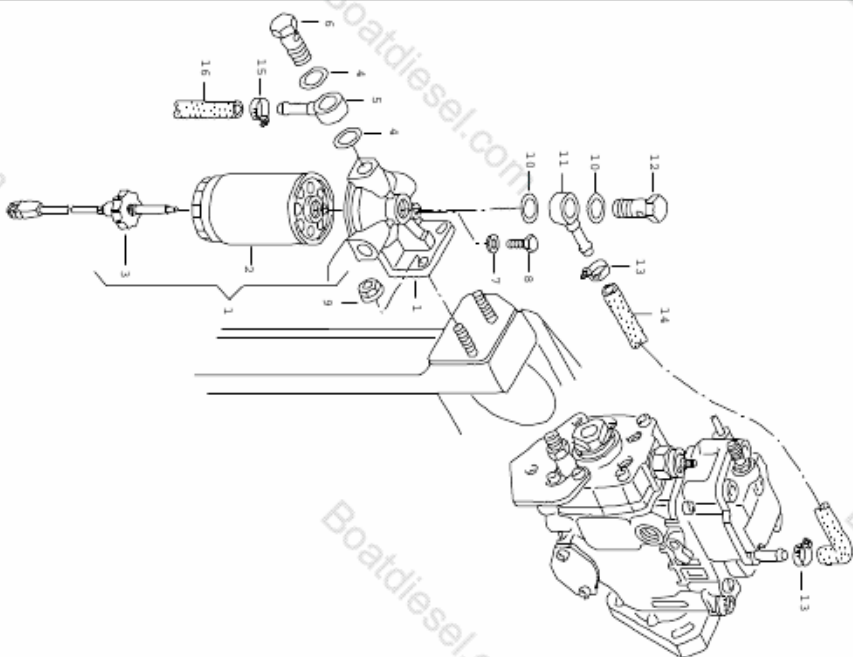


Ill-Nb	Model	Year	Eng-Number	VOLKSWAGEN marine	14:57	14.10.2010
121-70	Marine-Motore	2002 - 2009				



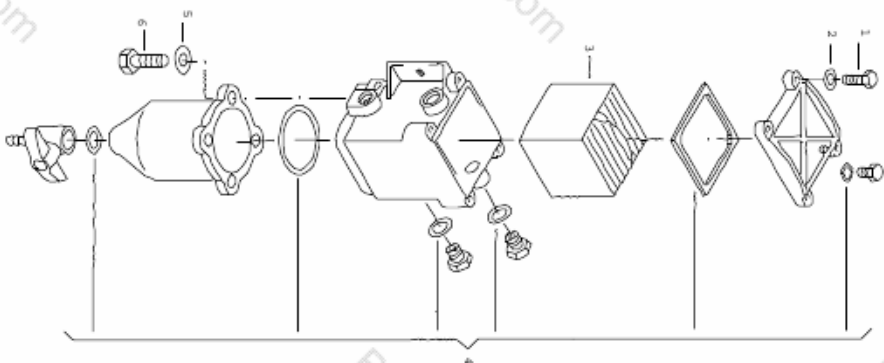
Pos	Part number	Description	Remark	Qty	Model
1	064 121 201	radiator	1.9ltr.	1	ANC, BGL, BGM, CDXA, CDXB
2	443 121 321	locking cover		1	
3	171 121 327	O-ring		1	
4	N 902 400 02	round seal	24X4	1	
5	251 919 372 A	water level switch plug housing	2 pin 2X3,5MM 1-1	1	
6	N 014 717 2	allen key head bolt	M8X40	8	
7	064 121 483	locking cover		1	
8	065 121 666	round seal	75X3,5	X	
9	064 129 703	round seal		1	
10	065 145 227 A	distance piece		1	
11	064 121 483 A	locking cover		1	
12	N 902 972 02	O-ring	18X22	1	
13	065 198 201	1 self galvanic anodes		1	
14	074 121 953	drain plug		1	
15	075 121 113 D	coolant thermostat	80C	1	
16	064 121 139	O-ring		1	
17	N 904 363 01	O-ring	67,6X3,55	1	
20	037 253 039 F	gasket		1	
21	064 301 198	bolt, hex. hd. with shoul. (comb)		8	
22	N 101 560 09	hexagon head bolt c/w shoulder	M8X25	2	
-	G 012 A8F M1	coolant additive, plus	1.5ltr. iliac	1	

Ill-Nb	Model	Year	Eng-Number	VOLKSWAGEN marine	14:58	14.10.2010
127-20	Marine-Motore	2002 - 2009				



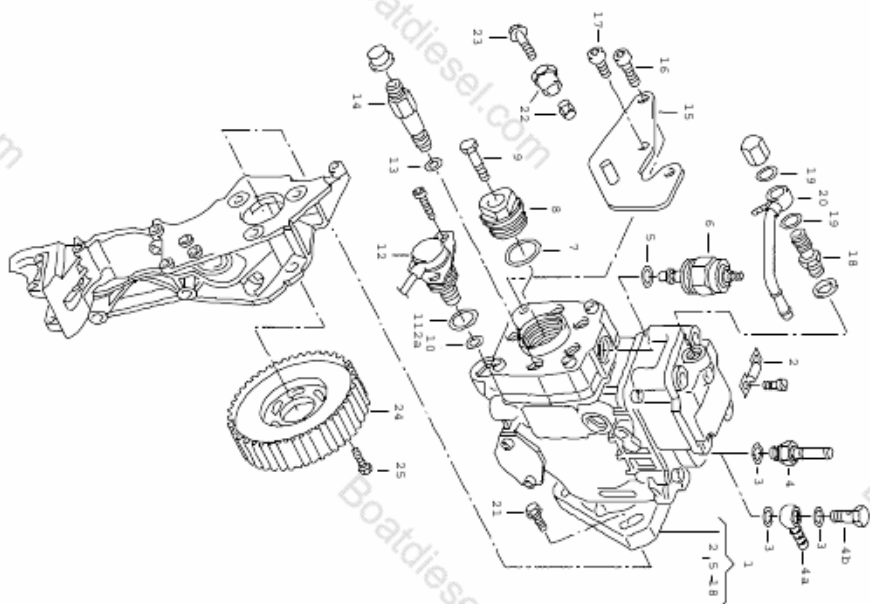
Pos	Part number	Description	Remark	Qty	Model
1	065 201 527	fuel filter	1.9ltr.	1	ANC,BGL,BGM
2	06V 201 511	fuel filter with flange		1	
3	028 919 372 A	water level switch	250MM	1	
4	N 013 814 2	o-ring	14X18	2	
5	N 902 546 01	banjo union	10X7	1	
6	N 903 580 03	banjo bolt	M14X1,5	1	
7	N 013 820 6	o-ring	16X20	1	
8	N 010 237 6	hexagonal head bolt	M8X12	1	
9	N 102 613 10	hexagon nut, shouldered	M10	2	
10	N 013 814 2	o-ring	14X18	2	
11	N 902 546 01	banjo union	10X7	1	
12	N 903 580 03	banjo bolt	M14X1,5	1	
13	N 906 867 01	spring-type clip	14X12	2	
-	N 103 035 04	hose in coils of 5m	7.3X3,5	*	
14		order unit 5 marked white shorten to:	-RME- 240 MM	1	

Ill-Nb: 127-40	Model Marine-Motore	Year 2002 - 2009	Eng-Number	VOLKSWAGEN marine	14:59	14.10.2010
-------------------	------------------------	---------------------	------------	-------------------	-------	------------



Pos	Part number	Description	Remark	Qty	Model
1	N 010 209 5	fuel filter		4	
2	N 011 556 2	water trap		4	
3	2Y1 127 177	hexagonal head bolt	M5X25	4	
(3)	2Y1 127 177 A	washer	5,3X9,5X1	1	
4	2Y1 298 025	filter element		1	
(4)	2Y1 298 025 A	filter element		1	
5	N 011 556 2	only for:	BIODIESEL	4	
6	N 010 264 4	seal/gasket set for fuel filter	5,3X9,5X1	4	
		seal/gasket set for fuel filter	M5X20	4	
		only for:			
		fuel filter			
		hexagonal head bolt			

Ill-Nb 130-20	Model Marine-Motore	Year 2002 - 2009	Eng-Number	VOLKSWAGEN marine	15:00	14.10.2010
------------------	------------------------	---------------------	------------	-------------------	-------	------------



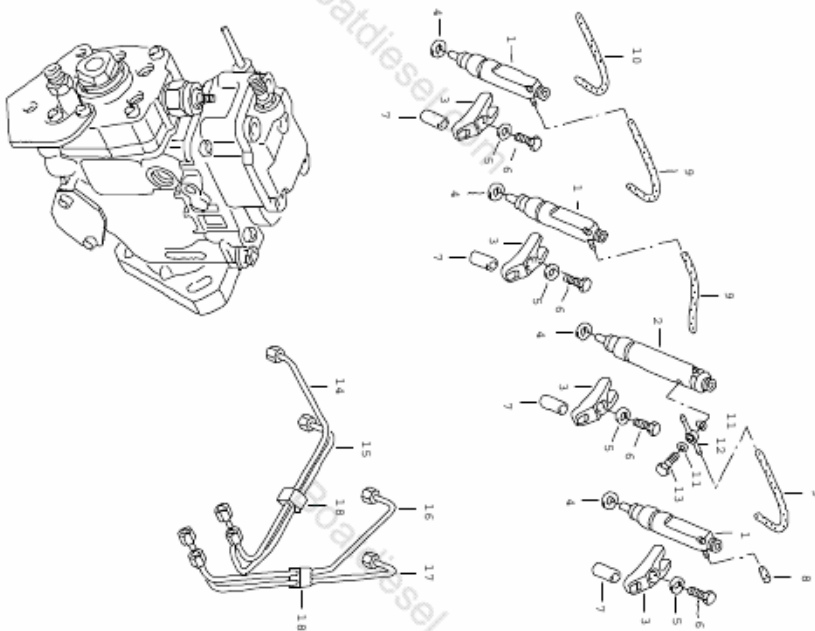
Pos	Part number	Description	Remark	Qty	Model
1	064 130 107	Injection pump	1.9ltr.	1	ANC,BGL,BGM, CDXA,CDXB
2	028 906 040 C	temperature pump		1	
3	N 013 813 1	o-ring	12X17	1	ANC,BGL,BGM
(3)	N 013 813 1	o-ring	12X17	2	CDXA,CDXB
4	074 130 355 C	connecting part	feed	1	ANC,BGL,BGM
4A	N 901 494 01	banjo union	8X7	1	CDXA,CDXB
4B	N 021 071 7	banjo bolt	M12	1	CDXA,CDXB
5	068 130 139	seal for		1	
6	065 130 135	fuel cut-off solenoid		1	
7		fuel cut-off solenoid		1	
8		not replacement part			
9	028 130 231	sealing plug		1	
10	028 130 684	round seal		1	
11	046 130 684 A	round seal		1	
12	028 906 283 M	solenoid valve		1	
(12)	028 906 283 P	wire set	180MM	1	
13	068 130 787 A	solenoid valve	300MM	1	
14	028 130 795 J	o-ring		4	
15	028 130 149 B	union		4	
16		support		1	
17		not replacement part			
18	028 130 122 B	air supply valve		1	
19	N 013 813 1	o-ring	12X17	2	
20	038 130 465 A	connecting part	return	1	
21	N 101 092 10	hexagon head bolt c/w shoulder	M8X30	3	
22	038 130 095	bush		1	

Ill-Nb. 130-20	Model Marine-Moteur	Year 2002 - 2009	Eng.Number	VOLKSWAGEN marine	15:00	14.10.2010
-------------------	------------------------	---------------------	------------	-------------------	-------	------------

Pos	Part number	Description	Remark	Qty	Model	Pos	Part number	Description	Remark	Qty	Model
23	N 019 503 5	hexagonal head bolt	M8X35	1							
24	038 130 111 B	toothed belt pulley		1							
25	N 104 032 03	hexagonal head bolt	M8X16	3							

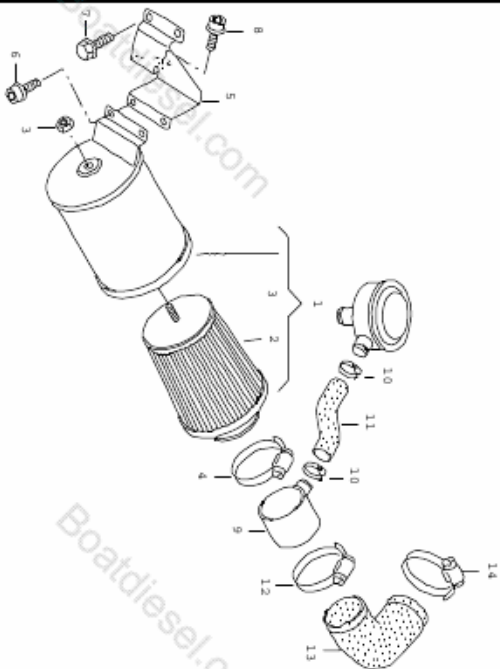
Ill-Nb 130-60	Model Marine-Motore	Year 2002 - 2009	Eng-Number	VOLKSWAGEN marine	15:01	14.10.2010
------------------	------------------------	---------------------	------------	-------------------	-------	------------

Pos	Part number	Description	Remark	Qty	Model
1	028 130 203 F	injector pressure pipes	1.9ltr.	3	ANC, BGL, BGM, CDXA, CDXB
(1)	028 130 201 TX	injector complete		3	
2	038 130 202 C	injector complete		1	
3	028 130 206	injector complete		4	
4	046 130 219 A	angled bracket		4	
5	N 023 731 2	o-ring		4	
6	N 010 350 6	retaining washer	8,4	4	
7	028 103 316 A	hexagonal head bolt	M8X50	4	
8	028 130 229 A	bearing bracket		4	
-	059 130 329	cap	3,8MM	1	
-		hose in coils of 5m 'order unit 5'	3,5X1,9 -RME-	*	
-	N 900 455 02	use if required:	N 900 455 02	X	
9		clamp	5X8	X	
10		shorten to:	130MM	3	
11	N 013 804 2	shorten to:	270MM	1	
12	046 130 121 A	o-ring	6X10	2	
13	028 130 315	banjo union		1	
14	064 130 301	banjo bolt	M6	1	
15	064 130 302	pressure pipe		1	
16	064 130 303	pressure pipe		1	
17	064 130 304	pressure pipe		1	
18	068 130 431 C	pressure pipe clamp		2	

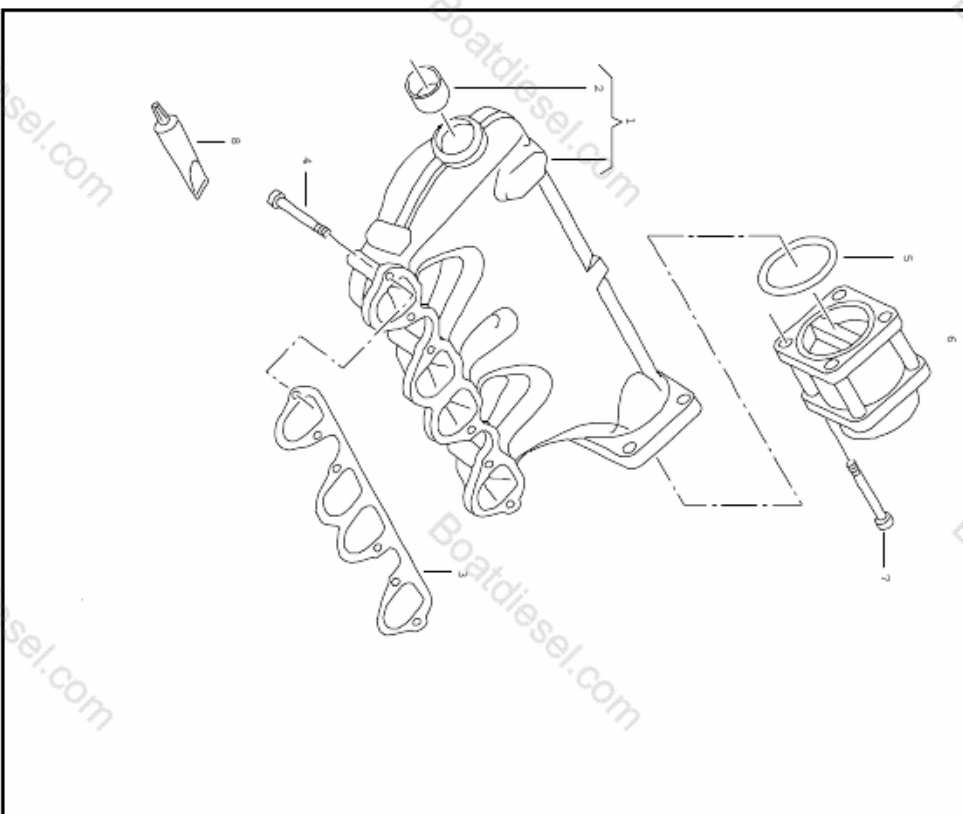


Ill-Nb	Model	Year	Eng-Number	VOLKSWAGEN marine	15:02	14.10.2010
133-10	Marine-Motore	2002 - 2009				

Pos	Part number	Description	Remark	Qty	Model
1	065 131 575	air cleaner filter element	1,9ltr.	1	ANC,BGL,BGM
2	065 133 843	air cleaner filter element		1	
3	904 369 03	hex. nut, self-locking with washer	M6	1	
4	906 562 01	spring-type clip	70X12	1	
5	064 133 165	bracket - air cleaner		1	
6	102 480 01	hexagon socket head bolt with collar	M6X14	2	
7	101 559 06	hexagon head bolt c/w shoulder	M8X20	2	
8	103 389 01	hexagon head bolt c/w shoulder	M6X16	1	
9	064 133 603	charge air tube		1	
10	906 871 01	spring-type clip	32X12	2	
11	064 131 373	breather hose		1	ANC,BGL,BGM
11(1)	064 131 373 A	breather hose		1	CDXA,CDXB
12	906 562 01	spring-type clip	70X12	1	
13	064 133 385	intake hose		1	
14	906 561 01	spring-type clip	65X12	1	



Ill-Nb: 133-40	Model Marine-Motore	Year 2002 - 2009	Eng-Number	VOLKSWAGEN marine	15:03	14.10.2010
-------------------	------------------------	---------------------	------------	-------------------	-------	------------



Pos	Part number	Description	Remark	Qty	Model
1	064 133 224 A	suction pipe	1.9ltr.	1	ANC,BGL,BGM
2	N 011 908 5	control flap		1	
3	028 129 717 D	suction pipe	28	1	
4	N 903 514 02	locking cover		1	
5	N 900 733 01	gasket	M8X55	6	
6	038 128 063 J	allen key head bolt	65X3,5	1	
7	N 101 582 03	o-ring		1	
8	D 154 102 A1	regulator flap	M6X60	4	
		allen key head bolt			
		(combi)			
		sealant	50G	1	



Ill-Nb	Model	Year	Eng.Number	VOLKSWAGEN marine		15:04	14.10.2010
145-10	Marine-Motore	2002 - 2009					

Pos	Part number	Description	Remark	Qty	Model
-	045 145 701 J	exhaust gas turbocharger	1.9ltr.	1	4-cylinder+ CDXA,CDXB
-	064 145 175	exhaust gas turbocharger adjuster unit adapler	GARRETT	1	
-	N 906 439 06	hexagon head bolt (combi)	M8X25	4	
-	1H0 253 115 A	gasket		1	
-	064 145 196	console		1	
-	059 253 115	gasket		1	
-	N 103 024 03	hexagon socket head bolt with collar	M6X25	1	
-	N 101 863 01	stud	M6X20	1	
-	N 910 700 01	cheese head bolt	M8X30	1	
-	N 015 082 13	hexagon nut, shouldered	M6	1	
-	064 861 705 B	lifting bracket		1	
-	1J0 253 115 S	gasket		2	
-	N 907 765 03	socket head bolt with inner multipoint head	M10X90	4	
-	064 145 771	oil pipe	feed	1	
-	059 103 728	union bantlo bolt with hex. socket hd.	M10X1	1	
-	N 013 806 3	o-ring	10X14	2	
-	064 145 786	threaded union	M10	1	
-	N 013 806 3	o-ring	10X14	2	
-	064 145 772	oil pipe	return	1	
-	N 101 961 03	bolt, with polygon socket hd. (combi.)	M6X18	2	
-	N 908 371 01	threaded union	12/M18X1,5	1	
-	028 145 757	gasket		1	
-	N 103 389 03	hexagon head bolt c/w shoulder	M6X16	2	